



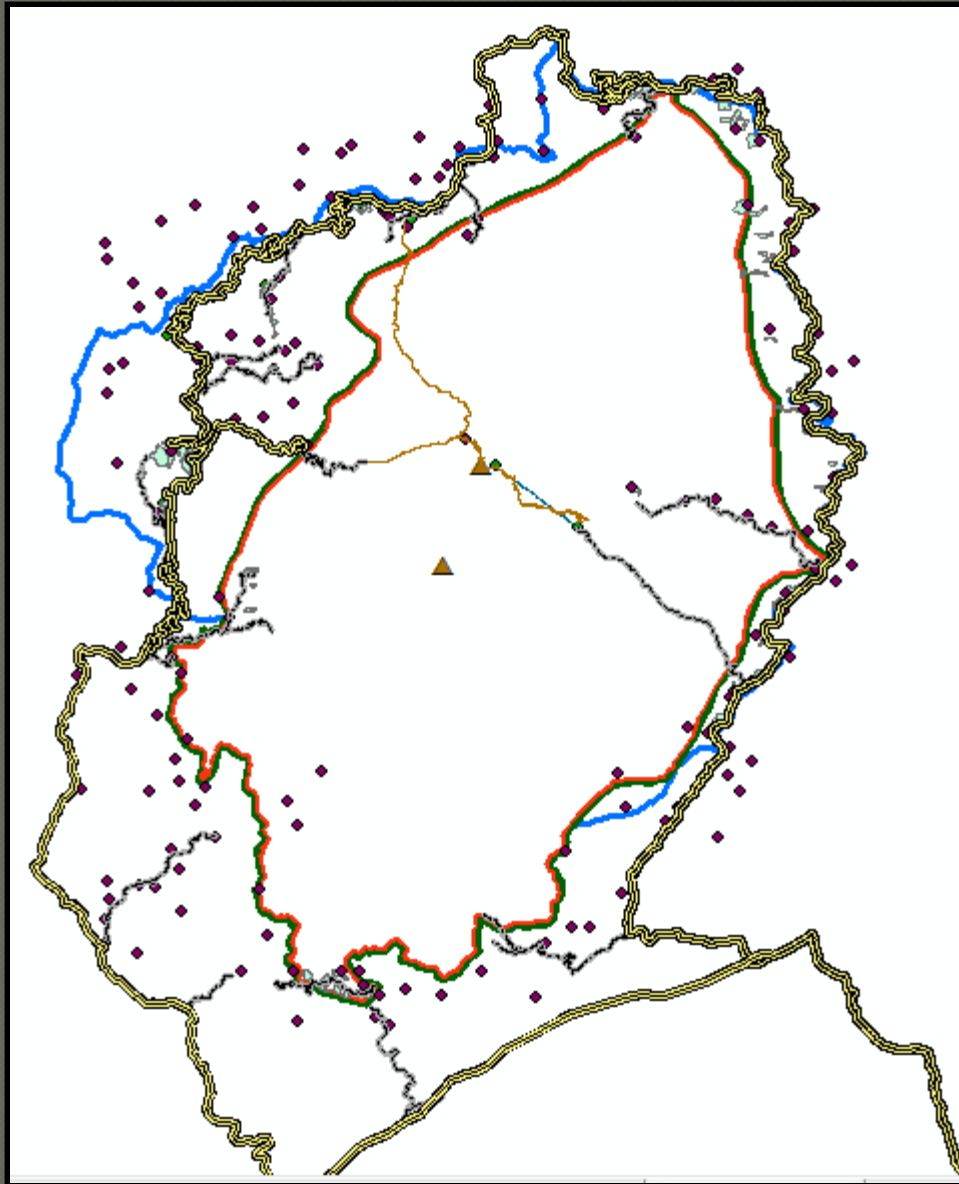
Ecological Data

project summit meeting
Hsiang Ling Chen

Dataset

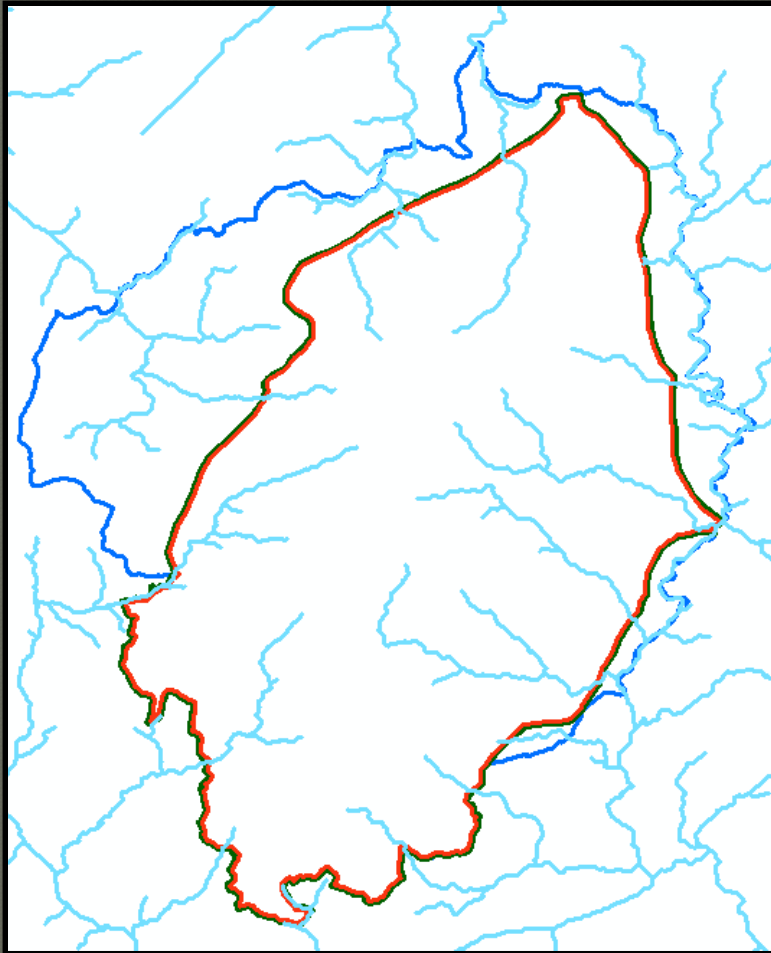
- ◉ GIS (FNNR)
- ◉ Vegetation plot (2015-2016)
- ◉ Camera trapping
- ◉ Vegetation plot (2012-2014)
- ◉ Where to find (An's research)

GIS



- Boundary
- Roads
 - Main roads
 - Dirt roads
- Trail
- Cable car route
- Villages
- Peak
- PES (areas & points)
- River

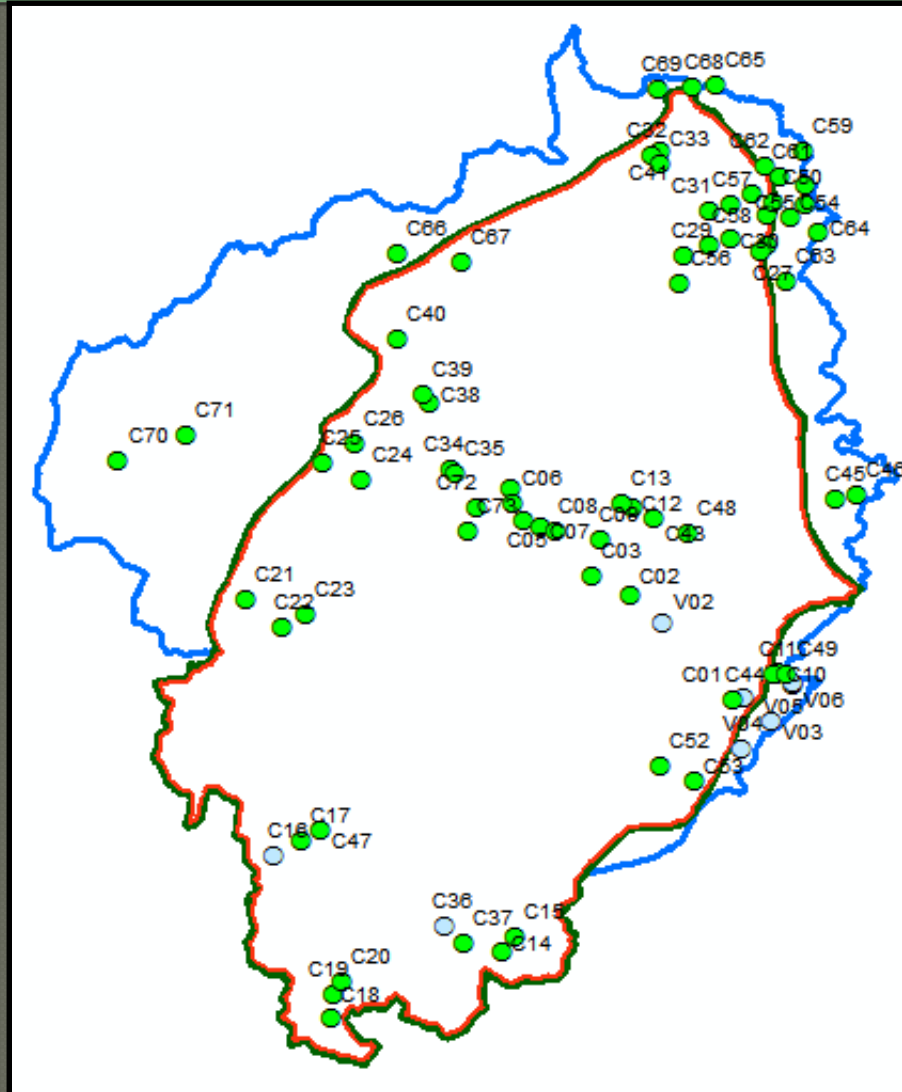
GIS



- Boundary
- Roads
 - Main roads
 - Dirt roads
- Trail
- Cable car route
- Villages
- Peak
- PES (areas & points)
- River

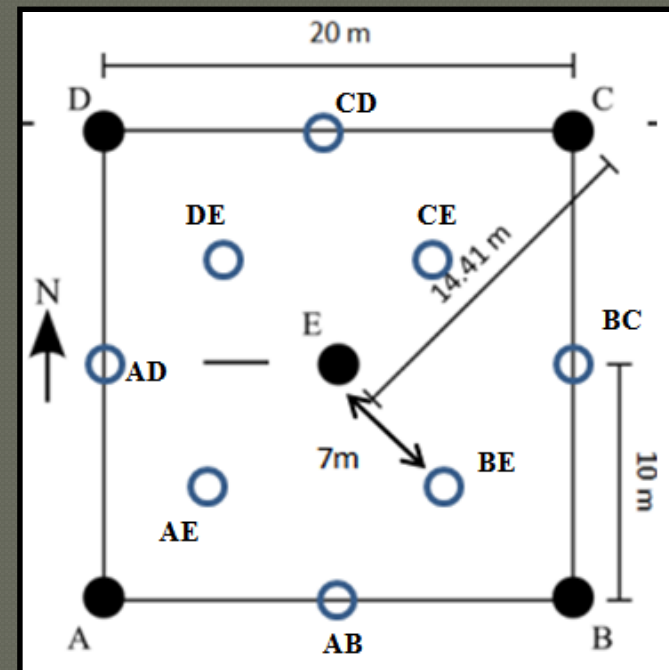
Vegetation plot (2015-2016)

- 79 vegetation plots (71 camera sites)



Environment

- Forest type
- Cover
 - Canopy fractional cover (CFC)
 - Understory cover
- Plant species (ground, midstory, overstory)
 - Diversity & richness
- Forest structure
 - Tree height
 - Diameter at breast height (DBH)
 - Number of tree
- Topography
 - Slope (ground measure & DEM)
 - Aspect (ground measure & DEM)
 - Degree to north
 - Elevation
 - Distance to river
- Human activity
 - PES plot or not
 - Signs of human activity
 - Distance to villages
 - Distance to roads
 - Distance to trails
 - Distance to cable car route



Data storage: vegetation plot (2015-2016)

- ◉ Datasheet
- ◉ Access database with camera setting record (electronic copy of data)
- ◉ **Summary table (excel)**
 - Environment
 - Detection of human or livestock by cameras in 2015
 - Wildlife species richness (2015)

Camera trapping

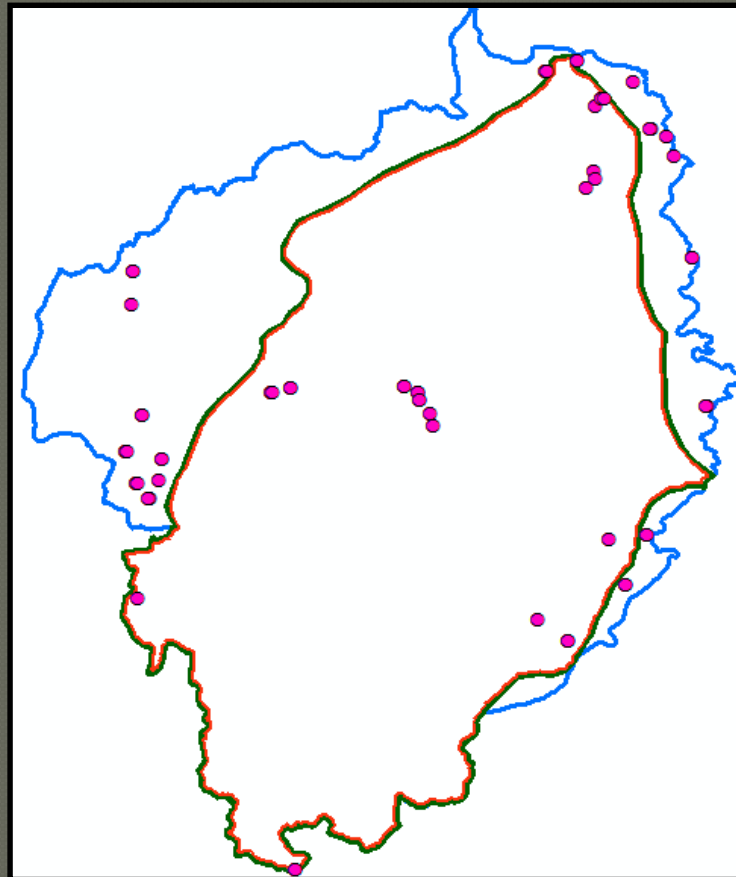
- ◉ Spring, 2015 – summer, 2016
- ◉ Photos & videos
- ◉ Photo processing (spring, 2015 – spring, 2016)
 - Date/ Time
 - Camera station
 - Species (wildlife, human, livestock)
 - Number of individuals
 - Sex, age class

Data storage: camera trapping

- Processed photos & unprocessed videos (hard drive)
- Excel table of camera trapping photos
- Survey covariates & detection history (excel)
- **Probability of occupancy of wildlife & livestock** (not available now)

Vegetation plot (2012-2014)

- 57 records (about 35 plots)
- Environment (same as vegetation plots of 2015-2016, more missing data)



Data storage: vegetation plot (2012-2014)

- ◉ Datasheet
- ◉ Access database (electronic copy of data)
- ◉ **No summary table**