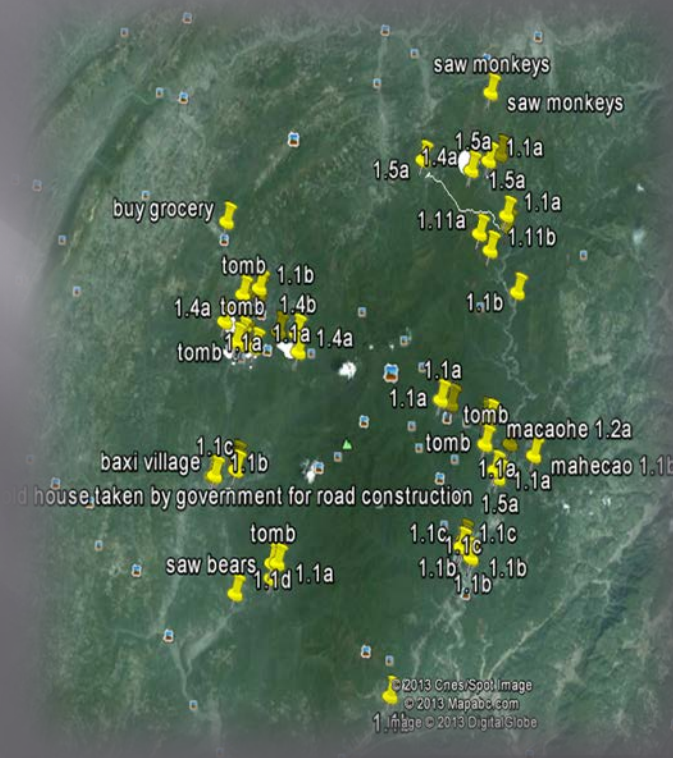
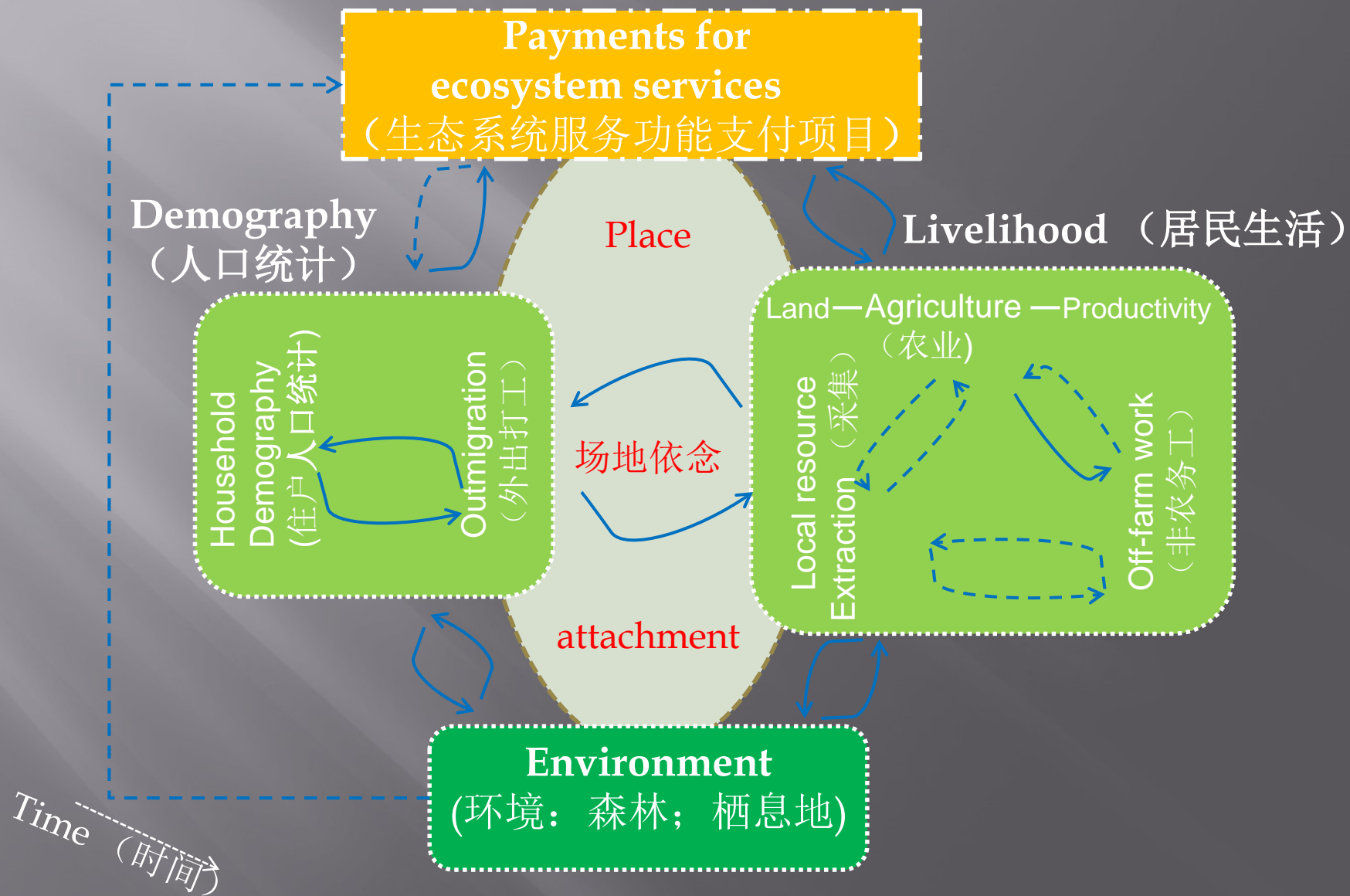


# Human-Environment Relations, Deep Mappings and Development



Stuart C. Aitken  
June Burnett Chair  
Professor of Geography  
Director, Centre for Interdisciplinary Studies of Youth and Space





- ▣ Alternative Development Theory
  - Place and People-Centered
  - Radical Ethical Acts
- ▣ Figured Worlds
  - Affective Ecologies
- ▣ Deep Mappings
- ▣ Young People, Families, Ethical Acts & Aesthetics

- ▣ **Alternative Development Theory**
  - Place and People-Centered
  - Radical Ethical Acts
- ▣ Figured Worlds
  - Affective Ecologies
- ▣ Deep Mappings
- ▣ Young People, Families, Ethical Acts & Aesthetics



- ▣ Critique of Enlightenment ideas on development and modernization
- ▣ Focus on Reproduction as a critical part of Economic Development

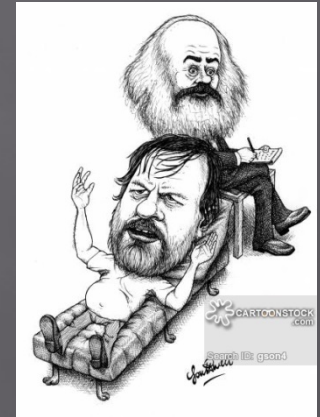
A photograph of two women in a rural outdoor setting. One woman, wearing a red shirt and a dark blue apron, is in the foreground, crouching and washing green leafy vegetables in a large, shallow, dark-colored bowl. Another woman, wearing a bright blue t-shirt and dark pants, is crouching in the background, also working with vegetables. The ground is dark and appears to be a paved or compacted dirt area. The background shows some greenery and a simple structure.

# Women, Children and Development



“... women’s and children’s views on the changes taking place in their own lives as well as in their families and the local surroundings”

## Radical Ethical Acts



“... when women enter new fields .... this necessarily implies changing relationships to fathers, brothers and husbands and may lead to new socio-cultural definitions of what belongs to the male and female spheres” (Lie and Lund 1995: 11).

- ▣ Alternative Development Theory
  - Place and People-Centered
  - Radical Ethical Acts
- ▣ Figured Worlds
  - Affective Ecologies
- ▣ Deep Mappings
- ▣ Young People, Families, Ethical Acts & Aesthetics



- ▣ Alternative Development Theory
  - Place and People-Centered
  - Radical Ethical Acts
- ▣ Figured Worlds
  - Affective Ecologies
- ▣ Deep Mappings
- ▣ Young People, Families, Ethical Acts & Aesthetics



Contents lists available at ScienceDirect

## Ecological Modelling

journal homepage: [www.elsevier.com/locate/ecolmodel](http://www.elsevier.com/locate/ecolmodel)



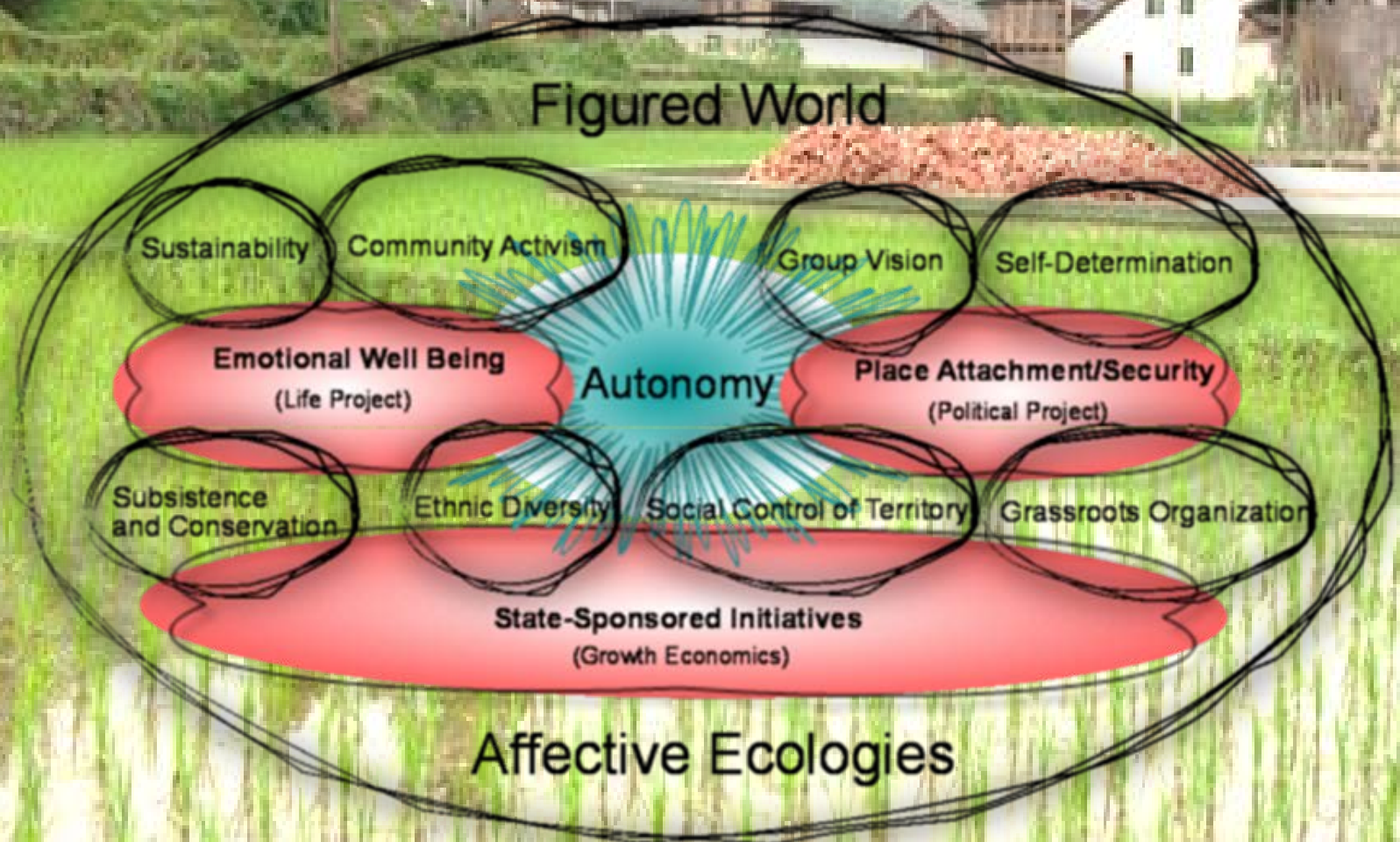
### Figured worlds: Environmental complexity and affective ecologies in Fanjingshan, China

Stuart C. Aitken\*, Li An

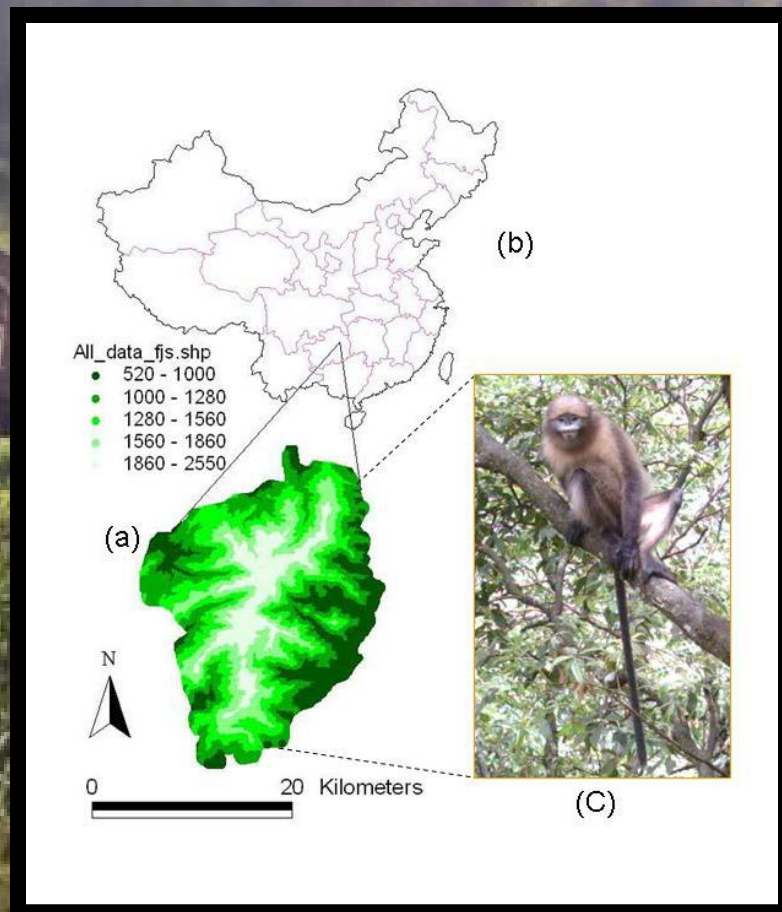
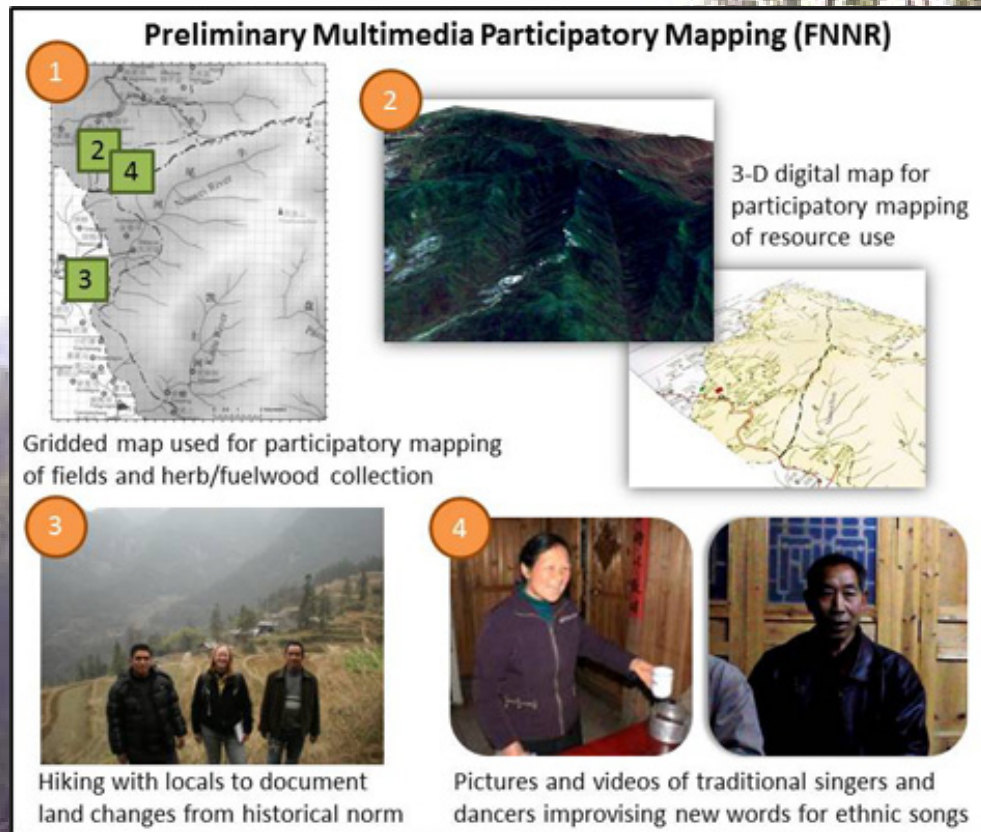
*Department of Geography, San Diego State University, 5500 Campanile Drive, San Diego, CA, USA*

- ▣ Local networks
- ▣ Local practices
- ▣ Local culture
- ▣ Local belonging
- ▣ Creation of a visible space/map













Search

Fly To Find Businesses Directions  
Fly to e.g., New York, NY  
[Search Box]

Places

- Home.kmz
- l.kmz
- Untitled Folder
  - Untitled Placemark
  - Untitled Placemark
  - Untitled Path
  - Untitled Path
  - Untitled Placemark
- <http://www.panoramio.com>
- Untitled Path
- Stu Path
- Untitled Path
- Untitled Path
- Untitled Path
- Untitled Path
- Untitled Path
- Untitled Image Overlay
- Temporary Places

[Search Box] [Up/Down Arrows]

Layers Earth Gallery

- Primary Database
  - Borders and Labels
  - Places
  - Photos
    - Panoramio
    - 360 Cities
  - Roads
  - 3D Buildings
  - Ocean
  - Weather
  - Gallery
  - Global Awareness
  - More

3/13/2012  
2011 2012

Click and drag to rotate, or click 'N' to reset to north



Yanshang  
Untitled Placemark  
Stu Placemark  
Untitled Placemark  
Untitled Placemark

Home

© 2012 Mapabc.com  
© 2012 Cnes/Spot Image  
Image © 2012 GeoEye

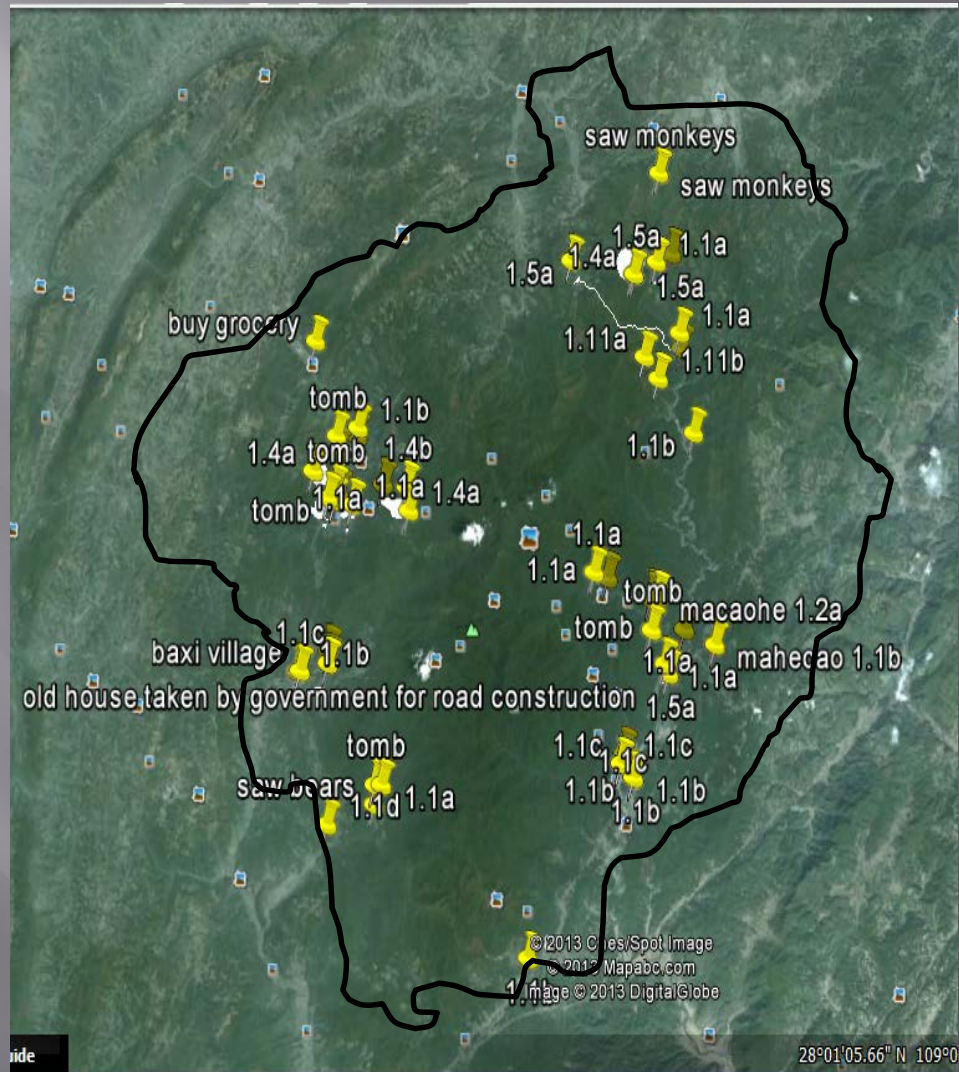
Google earth

Imagery Date: 3/18/2009 2004

27°46'13.07" N 108°41'09.17" E elev 4493 ft

Eye alt 19231 ft

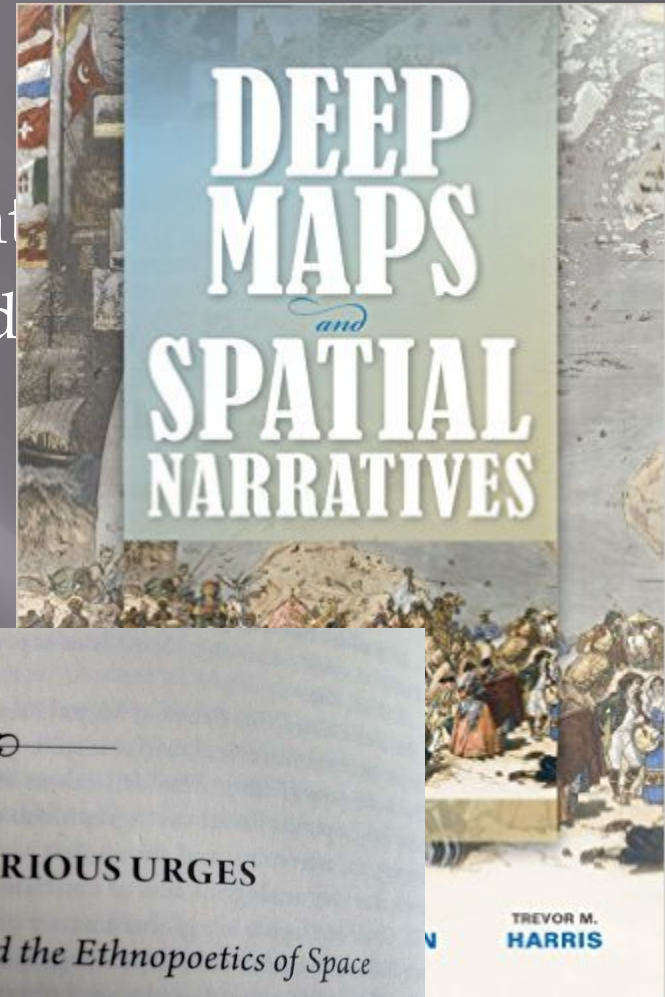






- ▣ Alternative Development Theory
  - Place and People-Centered
  - Radical Ethical Acts
- ▣ Figured Worlds
  - Affective Ecologies
- ▣ Deep Mappings
- ▣ Young People, Families, Ethical Acts & Aesthetics

- ▣ Alternative Development
  - Place and People-Centered
  - Radical Ethical Acts
- ▣ Figured Worlds
  - Affective Ecologies
- ▣ Deep Maps
- ▣ Young People's Aesthetics





To Grandma's village in summer (70km)

pure, clear, unfettered

Mountains with good views

Yunlei's village

Herb gathering

School (40km)

there are So many flowers at my grandma's place. My grandma likes to teach me about growing flowers



Xiaohuan's and Dandan's Village

Wedding Celebration



Xiaohuan: in Jiangkou, the conditions are better, so the teachers are strict

Dandan: our family is a little poorer, so I just got to Taiping

Image © 2013 DigitalGlobe

© 2013 Mapabc.com

© 2013 Cnes/Spot Image

Image Landsat

\$305

Google earth





## Chapter 11 Renegotiating Local Values: The Case of Fanjingshan Reserve, China

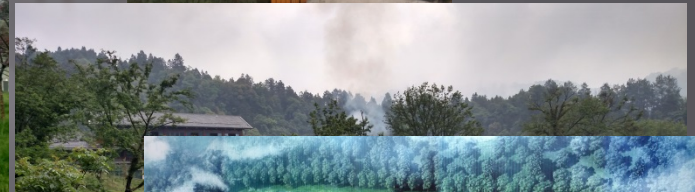
Stuart C. Aitken, Li An, Sarah Wandersee and Yeqin Yang

# Alternative Development

*Unravelling Marginalization, Voicing Change*



EDITED BY  
CATHRINE BRUN, PIERS BLAIKIE  
AND MICHAEL JONES



- ▣ Alternative Development Theory
  - Place and People-Centered
  - Radical Ethical Acts
- ▣ Figured Worlds
  - Affective Ecologies
- ▣ Deep Mappings
- ▣ Young People, Families, Ethical Acts & Aesthetics

- ▣ Alternative Development Theory
  - Place and People-Centered
  - Radical Ethical Acts
- ▣ Figured Worlds
  - Affective Ecologies
- ▣ Deep Mappings
- ▣ Young People, Families, Ethical Acts & Aesthetics



# Figured World

Sustainability

Community Activism

Group Vision

Self-Determination

Emotional Well Being  
(Life Project)

Autonomy

Place Attachment/Security  
(Political Project)

Subsistence  
and Conservation

Ethnic Diversity

Social Control of Territory

Grassroots Organization

State-Sponsored Initiatives  
(Growth Economics)

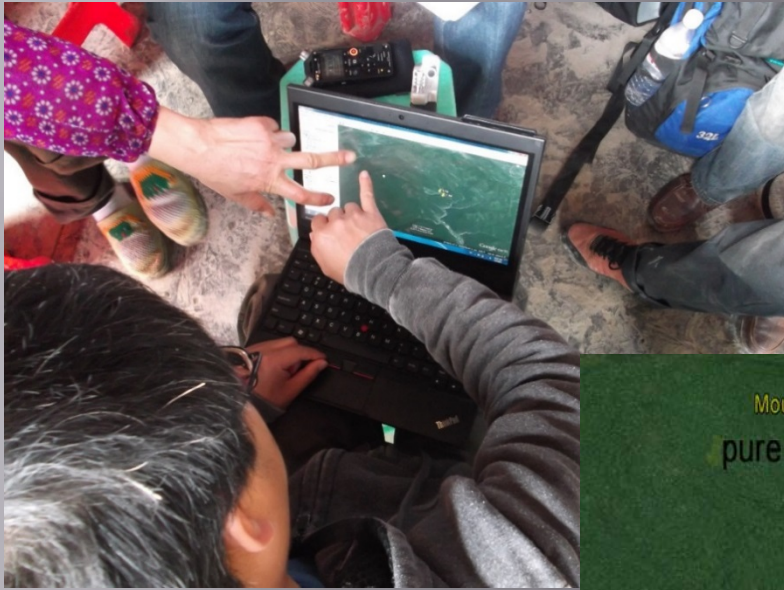
# Affective Ecologies

Youth  
Voicelessness  
Youth  
Voicelessness

Youth  
Political Presence  
Youth  
Political Presence

Political  
Involvement  
of Young People  
of Young People

Vocal  
Young People  
Vocal  
Young People





Copyrighted Material



# Children, Nature, Cities



Edited by

**ANN MARIE F. MURNAGHAN  
AND LAURA J. SHILLINGTON**

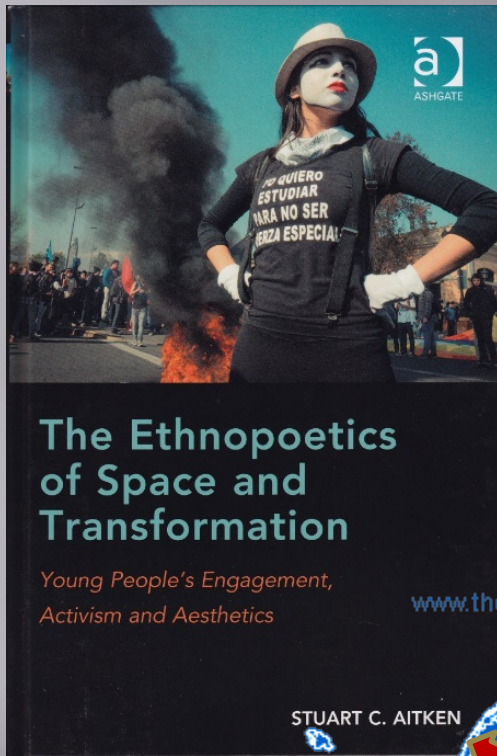
Copyrighted Material

## Chapter 6

# Nature's Legacy: Children, Development, and Urban Access in Fanjingshan, China

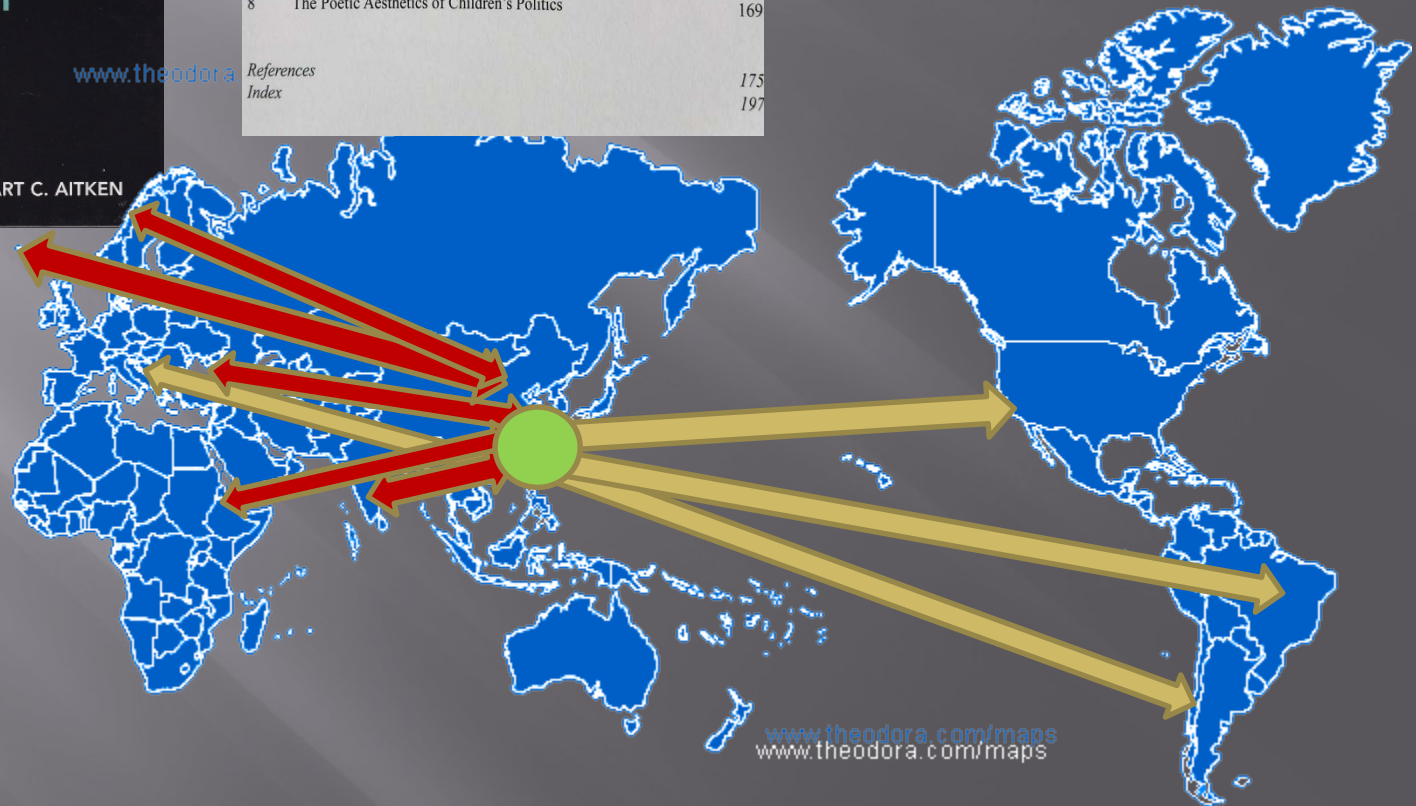
Stuart C. Aitken, Li An, Steven Allison, and Shuang Yang





## Contents

<i>Illustration Acknowledgments</i>	vii
<i>Preface</i>	ix
1 Birthing the Poetics of Space and Transformation	1
2 Ethnopoetics	19
3 Disrupting Spatial Competencies and Affordances	27
4 Development, Figured Worlds and Affective Ecologies	57
5 Schoolyards, Violence and Landscapes of Revolution	97
6 Children's Work, Civic Responsibilities and Refashioning Citizenship	119
7 Poets and Stateless Children	143
8 The Poetic Aesthetics of Children's Politics	169
<i>References</i>	175
<i>Index</i>	197



- ▣ Alternative Development Theory
  - Place and People-Centered
  - Radical Ethical Acts
- ▣ Figured Worlds
  - Affective Ecologies
- ▣ Deep Mappings
- ▣ Young People, Families, Ethical Acts & Aesthetics

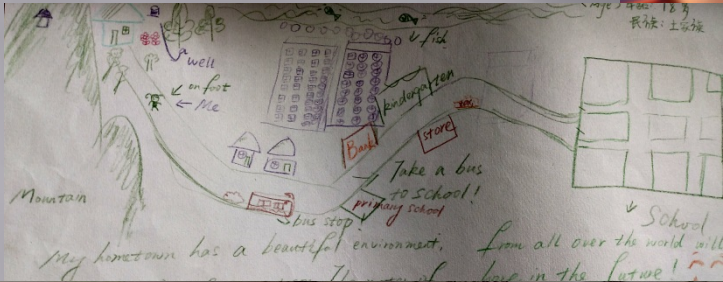
- ▣ Alternative Development Theory
  - Place and People-Centered
  - Radical Ethical Acts
- ▣ Figured Worlds
  - Affective Ecologies
- ▣ Deep Mappings
- ▣ Young People, Families, Ethical Acts & Aesthetics
- ▣ Future/Unpublished Work



FNNR Focus Groups, May 2015

Read kids' version of consent form and have them sign it (if over 18), otherwise we need to have them send it home to get parents' signatures (send Chinese version to Minjuan so she can send it to the school principals to get consents in place before we arrive).

Have the students fill out the basic information from the survey: Home address, ethnicity, number of other family members, where they've been to school in the past etc. (this sho





X4: Walk. Although it is tired, if we go there by cable, we just can watch overall the view, if we walk there, we will see many different views by different place. It also has some rare vegetables growing in

X4: I painted a road. There are a lot of trees before. Now we cannot see those dense trees, because they are all moved. The houses become higher than before.

(Discussing)

S: I think your maps all have some childhood's memory. ALL have house tree.

X1: All are ecological. We are all concerned about the environment.

S: Why are you drawing ecologically?

X1: Because the environment we live in.

X4: Women just do not want to be the person who is behind the men.

S; I think life has changed. It was not like this 100 years ago.

X4: Women's liberation movement.

high-rise apartment

